



RobuSTO Series

Auto Feed Solid Fuel Boilers



RobuSTO Series

Auto Feed Solid Fuel Boilers



“COMFORT with ECONOMY ”

With an advanced control panel, light weight new generation reducer motors, auto grill mixer, drop feeding system and stainless steel grate, RobuSTO series offer the best available domestic auto feeding coal boilers in the market.

With 3 pass baffle plate heat exchanger system inside the combustion chamber, Unlike the tubed models in the market, heavy accumulation of soot is eliminated by this system. Moreover, Cleaning has been simplified more than ever. Large loading doors allow fast reloading and ease in cleaning. With its Compact size and weight installation process is made fast and convenient.

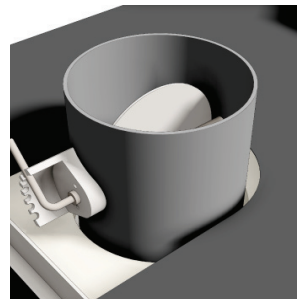
Fuel tank is placed at the rear to enable a compact structure and a smaller footprint in the house. This product will heat your house and keep your wallet in your pocket.

Features



Control Panel:

Advanced control panel regulates the boiler by thermostatically controlling the fan by set temperature. It is able to hibernate the fire by feeding small amounts in periods.



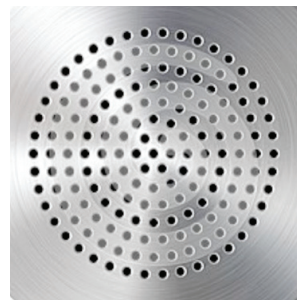
Chimney Regulator:

Strong draft could distort the combustion process therefore must be regulated. A standard feature in Robus series, the draft regulator set during commissioning by the installer eliminates this problem.



Air Fan:

High capacity radial fans provides the air required by the combustion efficiently and quietly.



Special Grates:

These long life stainless steel grills have a mixer system which mixes the fire regularly to improve the combustion.



Large Loading Doors:

Loading, Refueling and servicing made extremely easy thanks to the large opening doors of the Robus series.



New generation reducers:

Light weight, lower consumption and long life reducers do not require maintenance and ensures years of operation

Technical Specs

	TECHNICAL SPECIFICATION OF RobuSTO BOILER		UNIT	BOILER TYPE		
				RobuSTO 25	RobuSTOo 40	RobuSTO 60
OPERATING CONDITIONS	Capacity		kW	29	47	70
			kcal/h	25.000	40.000	60.000
	Approx. Efficiency		%	83		
	Fuel Type		-	Coal, Size < 35 mm		
	Electrical Connections			230 Vac, 50 Hz, 16 A		
	Operating		bar	2,5		
	Test Pressure		bar	4		
	Safety Limit Temperature		°C	95		
	Boiler Set Temperature Range		°C	50-80		
Min. Return Temperature			40			
MAIN DIMENSIONS	Boiler Width, W_1		mm	600		
	Total Width, W_2		mm	1.015		
	Boiler Depth, L_1		mm	710	810	935
	Boiler Height, H_1		mm	1.196		
	Total Depth, L_2		mm	1.255	1.355	1.480
	Stack Diameter (outer), $\varnothing D_2$		mm	150		180
	Stack Connection Height, H_2		mm	1.292		
	Connection Position, L_2		mm	204		
	Empty Weight		kg	285	310	350
	Water Content			75	90	110
HEATING SYSTEM CONNECTIONS	Safety Inlet&Outlet Diameter, $\varnothing D_3$		inch	3/4"		1"
	Boiler Inlet&Outlet Diameter, $\varnothing D_4$		inch	1 1/4"		1 1/2"
	Inlet Connections Height, H_3		mm	330		
	Outlet Connections Height, H_4		inch	1.350		
	Recommended Expansion Tank Volume			24	50	80
STOKER	Silo Volume		lt	115		
	Approx. Fuel Weight	Coal	kg	90		

