



# S-Dragon Series

Greenhouse Mobile Heater Platforms





# S-Dragon Series

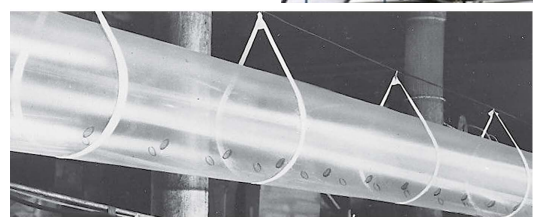
## Greenhouse mobile heating platforms



### Designed specifically for the Greenhouses

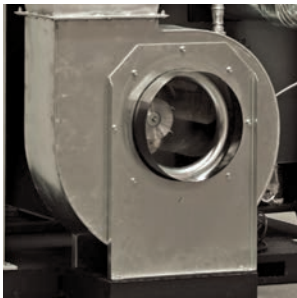
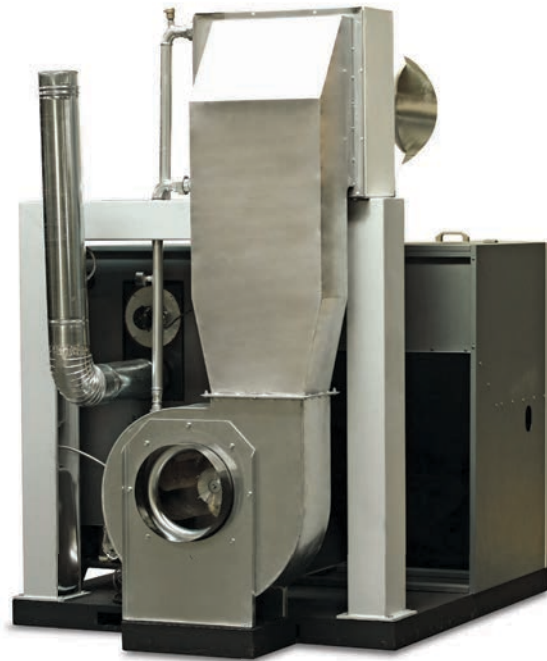
The new generation Ecm boilers now have a new platform designed on specifically with the Greenhouses and Agricultural spaces in mind. These extremely efficient products are available to be transported via Forklift and placed to work as soon as they are placed.

They are able to push the air to 25m and could achieve up to 50m range with a suitable air duct. Thanks to its Integrated dual closed expansion tanks, circulation pump and plumbing and being as a all in one product, the mobility has been improved amazingly. Being All independent of external factors, Dragon series platforms are the best friend of the Farmers.





# Features



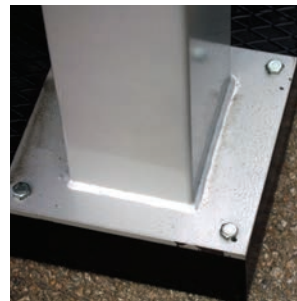
**Hi Capacity Jet Fan**  
A high capacity Jet fan enables the unit to blow air to all Greenhouse long.



**Dual Expansion Tanks**  
Dual Closed expansion tanks are installed to allow Dragon series to keep up with rapid heating and cool down operations.



**Precision Positioning**  
All equipment is precision assembled at the factory, allowing an assembly free start-up at the customers house.



**Robust Construction**  
Dragon platforms are designed so that they will endure years long heavy duty operation.



**Air Duct**  
The S-Dragon could achieve 50m of range with a suitable air duct and provide hot air for the entire greenhouse with an even flow.



**Heat Exchange System**  
Being part of a single design, The Fan, heat exchanger and the connecting air duct ensures leak free operation and years of product life.



**Integrated Plumbing**  
The plumbing, circulation pump and the closed system complies with the industry standards and ensures a system independent operation.



**Heat Meter**  
An optional heat meter would allow you to record and keep the heat generated.



# Technical Specifications

S-DRAGON SERIES Technical Specifications		Unit	MODEL	
			S-DRAGON 60	
CAPACITY	Nominal Capacity	kW	60	
		kcal/h	51.600	
CAPACITY	Minimum Capacity	kW	18	
		kcal/h	15.480	
BLOWER	Blower Capacity	kW	1 x 60	
		kcal/h	1 x 51600	
	Power	W	1.100	
	Blower Dimesnions (WxLxH)	mm	700 x 1150 x 700	
	Connection Dimensions - In - Out	inch	1"	
OPERATING CONDITIONS	Safety Limit Termostat interrupt	°C	95	
	Max. Operating Temperature	°C	90	
	Min. Return Temperature	°C	55	
	Boiler Operating Pressure	bar	3	
	Boiler Test Pressure	bar	4,5	
	Electrical Connections	-	230Vac , 50 Hz	
	Recommended Fuel Specifications	-	Ø6 -8 premium pellet	
MAIN DIMENSIONS	W1, Platform width	mm	1.700	
	L1, Platform depth	mm	2.150	
	H1 Boiler height	mm	1.360	
	H3, Total height	mm	2.340	
	ØD1 Chimney Connection dia. ( Outer / inner )	mm	150 / 146	
	H2, Chimney Conneciton height	mm	963	
	Water Content	lt	110	
	Total weight	kg	900	
	Fill and Drain connection	ØD2	inch	1/2"
	Closed Expansion Tank	lt	24	
TANK	Standard Tank Volume	lt	500	
	W4 - Storage Tank width	mm	800	
	L2 - Storage tank depth	mm	900	

